



Nowra **Christian** School

Grow up into Christ



Contact Information

P| 02 4422 1199

E| uniforms@ncs.nsw.edu.au

W| www.ncs.nsw.edu.au/uniforms

[Order
uniforms
online](#)

2024 UNIFORM GUIDE

Contents

Uniform expectations _____	3
Transition to new uniform items _____	3
K-12 Uniform Summary and Price Guide _____	4
Phase in/out dates for new/old uniform items _____	5
Primary (K-6) Uniform Requirements _____	6
Secondary (7-10) Uniform Requirements _____	8
Seniors (11-12) Uniform Requirements _____	10
K-12 Sports Uniform _____	12
Appearance Guide _____	13
Primary Shoe Guide _____	14
Secondary Shoe Guide _____	15
Mufti Day and Excursion Dress Code _____	16
Uniform Room _____	17
Uniform Fitting Tips _____	18

K-12 Uniform Guide

Uniform expectations

- The school expects all students to wear correct uniform, as outlined in this booklet, on all occasions. This includes wearing the correct uniform TO AND FROM school at all times.
- Uniform should be kept in good order and repair and worn neatly (no graffiti).
- **Parents are expected to advise the class/AM teacher in writing if for any good reason the full uniform cannot be worn.** It is expected that such issues would only be VERY temporary. We believe that uniform communicates a great deal about our school, but, more importantly, the way that parents and the school work together in maintaining appropriate standards in this area says even more about the strength of our community partnerships. Parents will be advised if the uniform is incorrect/incomplete.
- **All uniforms must fit correctly ie. not too small and tight fitting or too baggy and oversized.**
- **The length of all dresses and skirts must be long enough to touch the knee. Alterations may be required to achieve this. Please see fitting tips on page 18.**
- Boys shorts and pants must not be worn lower than the hips.
- If a t-shirt is worn under a uniform, the t-shirt must be plain, clean and white only – with no logo. The t-shirt is to be tucked in or if long-sleeved must be covered by jacket/jumper at all times.
- Secondary students who are not in correct uniform and without parental explanation will receive lunchtime detention. Any repeated offence could lead to exclusion from school activities.
- The school soft shell jacket may be worn as part of the school uniform (the school jumper will remain as part of the uniform). In extremely cold weather, extra layers may be worn underneath school uniform as long as they are not visible. Ideally, any extra layers will be as close to school colours as possible.
- **The school tracksuit jacket and pants are optional and are only to be worn as part of the PE uniform.**
- All uniform items (excluding shoes) are available from the uniform room and must not be purchased from external retail outlets. However, socks, tights, gloves and scarves can be sourced from external retail outlets provided they closely match the style sold in the uniform room.
- **School Bags** - Although the school does not stipulate what bag students should have, we expect students to have bags that are capable of safely transporting all school requirements (including BYOD devices in Secondary). We recommend any backpack that has been endorsed by medical authorities as safe for students' backs. The bag is seen to be a part of the uniform. Graffiti on bags is not accepted. You will be asked to replace your child's bag should any kind of graffiti be found on their school bag.

Transition to new school items

[This guide](#) outlines the phase in/out dates for old and new uniform items.

From January 2024 - The old primary dress can no longer be worn.



PRIMARY GIRLS (K-6):

ALL GIRLS (K-12):

SECONDARY GIRLS (7-10):

SENIOR GIRLS (11-12):

Preferred option for seniors

Tartan Dress (Red Tie) *table/backbelt sold separately \$10 each	New Red polo	Navy slacks with elastic waist	Navy gaberdine elastic waist shorts	Navy slacks with button-up waist	Navy tailored shorts with button-up waist	Navy skirt with pleats	Blue Blouse with NCS crest	Tartan Dress (Blue Tie) *table sold separately \$10 each	White blouse with NCS crest	Tartan skirt with pleats
\$65-\$70	\$36	\$25	\$30 - \$35	\$48	\$40-\$42	\$50 - \$52	\$36	\$65-\$70	\$32	\$52

PRIMARY BOYS (K-6):

ALL BOYS (K-12):

SECONDARY BOYS (7-10):

SENIOR BOYS (11-12):

Preferred option for seniors

New Red polo	Navy gaberdine elastic waist shorts	Navy gaberdine trousers	Navy tailored shorts	Navy tailored trousers	Blue shirt with NCS crest	White shirt with NCS crest
\$36	\$30 - \$35*	\$36*	\$45	\$52	\$36	\$32

UNISEX SPORTS (K-12) :

COLD WEATHER OPTIONS (K-12) :

Sports polo	Sports shorts	Sports tracksuit jacket	Sports tracksuit pants	Soft shell jacket	Soppy joe (K-6 only)	Unisex v-neck jumper (7-12)
\$30	\$30	\$55 - \$60	\$42-\$44	\$55 - \$60	\$27	\$45

NOTE: All items on this page are available from the NCS uniform store and must be purchased from the school uniform store. Please do not source similar looking products from other retail outlets. Prices are subject to change so please refer to online store for latest prices. * Prices can vary depending on style and size.

Updated: December 2022



COMPULSORY ACCESSORIES:

EVERYDAY UNIFORM	SPORTS UNIFORM
3 pack \$11	\$7 per pair
Navy crew length socks	White ankle length socks (covering ankles)
HATS:	
\$8 - \$12	\$6
Navy broad-brimmed hat (also available with inbuilt toggle)	Primary Boys navy legionnaire hat
\$6	
Secondary Navy cap	

NOTE: Red items are available from the NCS uniform store, however you are welcome to source your own of these items provided they look the same as those available from the uniform store.

OPTIONAL ACCESSORIES:

\$10	\$9-\$10	\$12
Navy scarf	Navy tights	Library Bag

PRIMARY SHOE GUIDE:

YES	NO

Shoes must be POLISHABLE low cut, fully enclosed all black leather lace up shoes with low flat heels (max 4cm heel). Primary only may have buckle or velcro tab instead of laces.

The following items do not meet the requirements:

- boots - footwear that covers not only the feet but also the ankles
- high-topped shoe - footwear that is between a boot and shoe
- sneaker style shoes with non-polishable components
- coloured stitching or trim
- suede
- platform heels
- skate or Converse style shoes

Shoes are not available from the Uniform Store

SECONDARY SHOE GUIDE:

YES	NO

Shoes must be POLISHABLE low cut, fully enclosed all black leather lace up shoes with low flat heels (max 4cm heel).

The following items do not meet the requirements:

- boots - footwear that covers not only the feet but also the ankles
- high-topped shoe - footwear that is between a boot and shoe
- sneaker style shoes with non-polishable components
- coloured stitching or trim
- suede
- platform heels
- skate or Converse style shoes
- Velcro

SPORTS SHOE GUIDE:

Sports shoes must be good quality, athletic style, lace-up sports shoe that give good support across a range of surfaces. They do not need to be a specific colour.

The following are not allowed:

- boots - footwear that covers not only the feet but also the ankles
- leisure style (boat shoes)
- skate or Converse style shoes

Updated: 23 January 2020



PRIMARY GIRLS (K-6):

Old Summer Dress

Can be worn until **end of 2023** (except not on school photo day 2023)

&

Old Winter Tunic

Can no longer be worn

Replaced by:

New optional all-year-round dress

Navy Tartan Dress (Red Tie/backbelt)

Old white polo

Can no longer be worn

Replaced by:

New blue shirt

Now available

or

New optional all-year-round dress

Navy Tartan Dress (Blue Tie)

ALL GIRLS & BOYS (K-12):



Navy socks with everyday uniform are now compulsory and white socks can only be worn with the sports uniform

PRIMARY BOYS & GIRLS (K-6):

Old red polo

Can no longer be worn

Replaced by:

New red polo

SECONDARY BOYS (7-10):

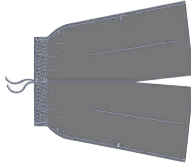
Old blue polo

Can no longer be worn

Replaced by:

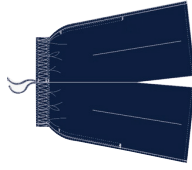
New blue shirt

ALL BOYS (K-10):



Can no longer be worn

Replaced by:



Navy shorts/pants

UNISEX SPORTS (K-12) :



no phase out date, can be worn until need to be replaced or stock runs out

Replaced by:



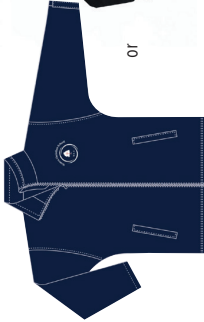
New sports shorts available now in some sizes

COLD WEATHER OPTIONS (K-12) :



Can only be worn with the sports uniform

Replaced (for everyday uniform) by:



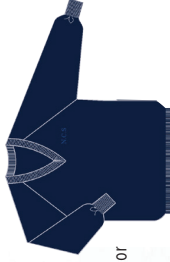
Soft shell jacket

or



Soppy joe (K-6)
Available now. Secondary students will not be allowed to wear this item after Jan 2023

or



Unisex v-neck jumper (7-12)

* Supply dates may be subject to change

NCS Uniform Requirements

Primary Girls' Uniform K-6

BLUE ITEMS = recent changes

- **Navy tartan dress with red tab tie & backbelt** OR NCS navy shorts/trousers and **NCS red polo shirt**
- Black leather lace up, buckle or velcro tab shoes – **Please refer to Primary Shoe Guide to ensure your shoe meets the requirements (page 14)**
- **Plain navy crew length socks** (above ankle – below knee) - available from the uniform store
- Navy or black bike pants are permitted provided they are no longer than uniform
- Navy broad-brimmed hat

- Sunglasses (optional) – ONLY worn outdoors with hat. Inexpensive, but eye safe brands recommended

Cold weather options

- Navy 'v' neck Sloppy Joe with NCS Crest.
- Navy soft shell jacket with school crest.
- Navy ribbed/opaque tights may be worn under tartan dress instead of socks.
- NCS approved navy slacks (available from the uniform room)



Tartan Dress (Red Tie)

*tabtie and backbelt sold seperately



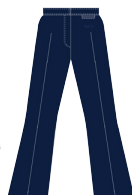
New Red polo



Navy slacks with elastic waist



Navy gaberdine elastic waist shorts



Navy slacks with button-up waist



Navy tailored shorts with button-up waist



Soft shell jacket



Soppy joe (K-6 only)

Primary Boys' Uniform K-6

- NCS navy shorts/trousers (available from the uniform room)
- **NCS red polo shirt**
- **Plain navy crew length socks** (above ankle – below knee) - available from the uniform store
- Black leather lace up or velcro tab shoes – **Please refer Primary Shoe Guide to ensure your shoe meets the requirements (page 14)**
- Navy legionnaire hat with neck flap or broad-brimmed hat (must be from uniform room ONLY)

- Sunglasses (optional) - ONLY worn outdoors with hat. Inexpensive, but eye safe brands recommended

Cold weather options

- Navy 'v' neck Sloppy Joe with NCS crest
- Navy soft shell jacket with school crest
- NCS approved navy trousers (available from the uniform room)



New Red polo



Navy gaberdine elastic waist shorts



Navy gaberdine trousers



Navy tailored shorts



Navy tailored trou:



Soft shell jacket



Soppy joe (K-6 only)



Secondary Girls' Uniform - Years 7 - 10

BLUE ITEMS = recent changes

- **Navy tartan dress with blue tab tie & no backbelt** OR NCS navy skirt/shorts (available from uniform room) with **NCS Blue Blouse**. Dresses and skirt length must touch the top of the knee (minimum length)
- Due to WHS requirements, fully enclosed all black leather lace up shoes. **Refer to Secondary Shoe Guide for full requirements (page 15)**
- **Plain navy crew length socks** (above ankle – below knee) - available from the uniform store
- Navy cap or navy broad-brimmed hat

- Sunglasses (optional) – ONLY worn outdoors. Inexpensive, but eye safe brands recommended

Cold weather options

- **Navy 'v' neck jumper** (not sloppy joe) (available from uniform room).
- Navy soft shell jacket with NCS crest
- Navy ribbed/opaque tights may be worn with skirts instead of socks.
- NCS approved navy slacks (available from the uniform room).



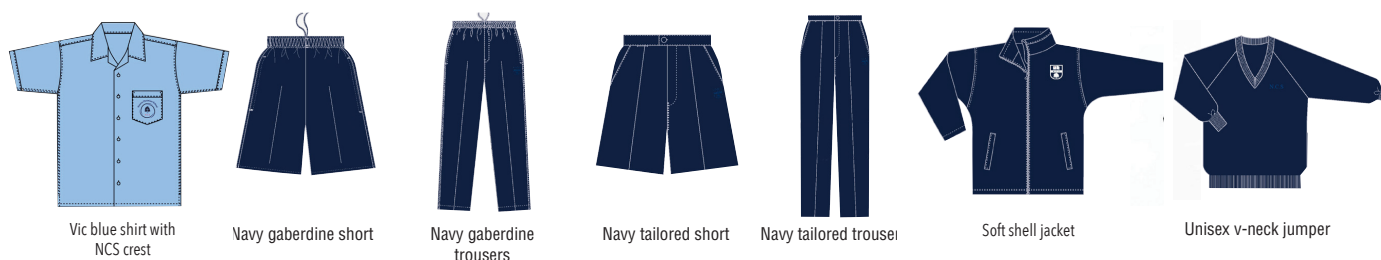
Secondary Boys' Uniform - Years 7 - 10

- **NCS navy shorts** (available from the uniform room)
- **Blue button-up shirt with NCS crest**
- Due to WHS requirements, fully enclosed all black leather lace up shoes. **Refer to Secondary Shoe Guide for full requirements (page 15)**
- **Plain navy crew length socks** (above ankle – below knee) - available from the uniform store
- Navy cap or navy broad-brimmed hat

- **Navy or black non-patterned belts only**
- Sunglasses (optional) – ONLY worn outdoors. Inexpensive, but eye safe brands recommended.

Cold weather options

- **Navy 'v' neck jumper** (not sloppy joe) (available from uniform room).
- Navy soft shell jacket with school crest
- NCS approved navy trousers (available from the uniform room)





YEAR 7-10
GIRLS

Unisex Soft Shell Jacket

Unisex Knitwear

Short Sleeved Blouse

Female Bootleg Trousers
TRF005 with embroidery

Formal Female Shorts
FS027 with embroidery



YEAR 7-10
BOYS

Unisex Soft Shell Jacket

Unisex Knitwear

Short Sleeved Shirt

Melange Trousers
KNXPTM-N / KNXPTY-N
with embroidery

Gabero Shorts
8GBP2SME / 8GAP2SYE
with embroidery



Senior Girls' Uniform - Years 11-12

- NCS blue tartan pleated skirt must be no shorter than the top of knee **OR** NCS navy shorts/trousers (available from the uniform room)
- White blouse (with NCS crest)
- Due to WHS requirements, fully enclosed all black leather lace up shoes. **Refer to Secondary Shoe Guide for full requirements (page 15)**
- **Plain navy crew length socks** (above ankle – below knee) - available from the uniform store
- Navy cap or navy broad-brimmed hat.
- Sunglasses (optional) – must be worn outdoors. Inexpensive, but eye safe brands recommended

Cold weather options

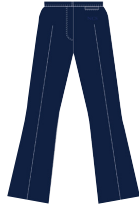
- **Navy 'v' neck** jumper (available from Uniform Room)
- Navy soft shell jacket with NCS crest
- Navy ribbed/opaque tights may be worn with skirts instead of socks
- NCS approved navy slacks (available from the uniform room)
- Senior Jersey is an optional extra, orders taken



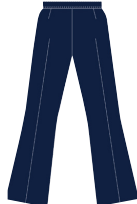
White blouse with NCS crest



Tartan skirt with pleats



Navy slacks with button-up waist



Navy slacks with elastic waist



Navy tailored shorts with button-up waist



Soft shell jacket



Unisex v-neck jumper

Senior Boys' Uniform - Years 11-12

- NCS approved tailored navy shorts/trousers (available from the uniform room).
- White short sleeve shirt with NCS Crest (available from the uniform room)
- Due to WHS requirements, fully enclosed all black leather lace up shoes. **Refer to Secondary Shoe Guide for full requirements (page 15)**
- **Plain navy crew length socks** (above ankle – below knee) - available from the uniform store
- Navy cap or navy broad-brimmed hat
- **Navy or black non-patterned belts only**

- Sunglasses (optional) – ONLY worn outdoors. Inexpensive, but eye safe brands recommended

Cold weather options

- **Navy 'v' neck** jumper (available from Uniform Room).
- Navy soft shell jacket with school crest
- NCS approved navy trousers (available from the uniform room)
- Senior Jersey is an optional extra, orders taken



White shirt with NCS crest



Navy tailored short



Navy tailored trouser



Soft shell jacket



Unisex v-neck jumper



UNISEX SPORTS UNIFORM K-12

- Navy blue unisex microfibre short with N.C.S embroidered or with the red piping (correctly fitting, not too tight) - available from the uniform room
- Light blue unisex polo shirt with navy/white side panels, red piping with NCS crest.
- Good quality, athletic style, lace up SPORTS shoe that give good support across a range of surfaces.

NO BOOTS, LEISURE STYLE OR SKATE SHOES/BOOTS

- Plain all white ankle socks (covering ankles)
- Optional NCS tracksuit/jacket OR plain navy **TRADITIONAL STYLE** track pants only. Low cut, tight pants are NOT acceptable.
- Correct navy hat according to school uniform guide
- No bike pants
- Girls will be allowed to compete in plain navy blue bike pants at representative C.C. and Athletics (optional).

- Shin pads and/or mouth guards are needed for some PE units.

Swimming Costumes

- **All students** must wear a **rash shirt with their swimming costume, unless actually competing in a swimming race or at an indoor pool.** Board shorts may also be worn over costumes.
- **Girls** - when representing NCS at any level, girls must wear a one-piece costume. One-piece costumes should be fully modest and non-transparent (no low front or high cut styles). Two-piece costume may only be worn with a rash shirt that completely covers the torso.
- **Boys** - must wear a swimming costume of a modest design. Board shorts are allowed.



Sports polo



Sports shorts



Sports shorts



Sports tracksuit jacket



Sports tracksuit pants

- **Please note: The sports tracksuit jacket can only be worn with the sports uniform and not the everyday uniform. The soft-shell jacket should be worn with the everyday uniform instead.**

Appearance Guide

We ask that both parents and students ensure that these guidelines and boundaries are followed and respected. Please note that the final decision in relation to all aspects of appearance policy will rest with the Principal.

Shoes

See the relevant shoe guide on page 16 (Primary) and page 17 (Secondary) of this book for the correct requirements. Please check carefully before making purchases as there are a lot of shoes on the market that will not meet these requirements.

Hats (K-12)

The correct school hat must be worn at all times the student is outside, including before school, outdoor PE lessons, recess, lunch, buslines and after school. Hats must also be worn to and from school and during excursions. Beanies are not considered sun safe. Beanies are no longer considered school uniform and cannot be worn.

DUE TO ISSUES WITH HEADLICE, HATS ARE NOT AVAILABLE FOR BORROWING FROM THE OFFICE AND STUDENTS ARE ASKED NOT TO LOAN HATS TO OTHER CHILDREN.



Makeup

The wearing of any makeup is not permitted in Primary (K-6) School.

In Years 7 - 12 students may wear a small amount of makeup which may include, light mascara, a small amount of foundation, a light (neutral) coloured lip gloss and a light (neutral) coloured nail polish.

Hair

Hair is to be kept clean, neat and well presented at all times (this also applies to facial hair). Hairstyles which are considered to be extreme or colourings outside the natural hair colour range are not acceptable. The natural hair colour range includes blondes, blacks, reds, and browns ONLY. No peroxiding.

ALL students with hair long enough to tie back, must have it tied back completely at all times.

Hair of a style/length that could cause a distraction in the learning environment (eg. hair over eyes) is not acceptable. 'Rat tails' are not acceptable. Dreadlocks are not acceptable. Razored-in designs are not acceptable. Mohawks are not acceptable.

Jewellery (K-6)

Jewellery is to be limited to one (1) watch, one (1) small plain ring and a maximum of one (1) earring in each ear ONLY (SMALL plain studs or sleepers). No nose adornments or extra body piercing allowed. Students who do not comply with this will be required to remove the extra jewellery.

Jewellery (Years 7 - 12)

In addition to what is allowed in Primary. Secondary students may wear One (1) simple gold or silver necklace and one (1) plain gold or silver bangle or bracelet. Students may have additional holes in each ear but these must be filled with clear studs ONLY. One (1) discreet, small plain nostril (side of nostril only) stud may also be worn. Any additional ear, nose or body piercing is not allowed.

Primary Shoe Guide



School Shoes

Shoes must be **POLISHABLE** low cut, fully enclosed all black leather lace up shoes with low flat heels (max 4cm heel). Primary only may have buckle or velcro tab instead of laces.

The following items **do not meet** the requirements:

- boots - footwear that covers not only the feet but also the ankles
- high-topped shoe - footwear that is between a boot and shoe
- sneaker style shoes with non-polishable components
- coloured stitching or trim
- suede
- platform heels
- skate or Converse style shoes



Sports Shoes

Sports shoes must be good quality, athletic style, lace-up sports shoe that give good support across a range of surfaces. They do not need to be a specific colour.

The following are **not allowed**:

- boots - footwear that covers not only the feet but also the ankles
- leisure style (boat shoes)
- skate or Converse style shoes



Secondary (Years 7-12) Shoe Guide



School Shoes

Shoes must be **POLISHABLE** low cut, fully enclosed all black leather lace up shoes with low flat heels (max 4cm heel).

The following items **do not meet** the requirements:

- boots - footwear that covers not only the feet but also the ankles
- high-topped shoe - footwear that is between a boot and shoe
- sneaker style shoes with non-polishable components
- coloured stitching or trim
- suede
- platform heels
- skate or Converse style shoes



Sports Shoes

Sports shoes must be good quality, athletic style, lace-up sports shoe that give good support across a range of surfaces. They do not need to be a specific colour.

The following are **not allowed**:

- boots - footwear that covers not only the feet but also the ankles
- leisure style (boat shoes)
- skate or Converse style shoes



Mufti Day and Excursion Dress Guide

In keeping with the school's ethos, clothing that is worn on mufti days and selected excursions, must be modest and appropriate for the occasion. The definition of modest and appropriate will be determined in the light of the school's ethos rather than any current fashion trend or expectation. It is important to note that the final decisions regarding modesty and appropriateness will be left to the discretion of the supervising teacher and/or the Principal.

General

Clothes must be of a modest design and fit (i.e. not see-through, tight fitting or short).

Jewellery and make-up must be kept to a minimum. Students deemed to be dressed inappropriately may be:

- sent home
- given something alternative to wear OR
- barred from any special events on that day at the school's discretion.

Tops

Shirts must not have any objectionable writing or pictures. Tops and bottoms must meet (overlap) Strapless tops, spaghetti tops or off-the-shoulder tops are not allowed.

Bottoms

Shorts and jeans must be worn so that underwear is not visible. Jeans and denim shorts must not have big holes or rips in them.

Skirts/dresses/shorts must be of a modest design and length. Mini-skirts or mini-shorts are unacceptable.

Hats

Students are required to wear hats so that they may follow the normal school hat policy

Shoes

Fully enclosed, laced up shoes must be worn. Exceptions to this are only allowed when the excursion note clearly says that other styles of shoes may be allowed.

Swimming Costumes

- **All students** must wear a **rash shirt with their swimming costume, unless actually competing in a swimming race or at an indoor pool.** Board shorts may also be worn over costumes.
- **Girls** - when representing NCS at any level, girls must wear a one-piece costume. **One-piece costumes** should be fully modest and non-transparent (no low front or high cut styles). **Two-piece costume** may only be worn with a rash shirt that completely covers the torso.
- **Boys** - must wear a swimming costume of a modest design. Board shorts are allowed.

Uniform Room

The Uniform Room will be open as advised in NCS Bytes. Alternatively you can order online at <https://nowra-christian-school.mybigcommerce.com>

Any online orders made over the summer holidays will be available for collection during conference week, as per January operation times. Please put a note on your order for your preferred pickup time - this means we can prioritise orders once we start back in 2024.

NORMAL UNIFORM ROOM HOURS

By appointment only

ITEM	SIZES
DRESSES/SKIRTS	
Navy tartan dress (Available Term 3, 2022)	4 - 16C 6A - 24A
Secondary navy skirt	6A - 24A
Senior skirt	6A - 24A
Tab tie/backbelt	one size
SHIRTS	
Short sleeved Primary red polo	4 - 16C XS - L
Senior boy's white shirt	12-32
Sec Girl's Blue Blouse	6 - 22A
Sec Boy's blue shirt	8 - 20A
Senior girl's white blouse	6 - 18A
SHORTS AND PANTS	
Shorts (elastic waist)	4C - 18C S-L
Trousers (elastic waist)	4C - 18C
Boys tailored shorts	8Y - 14Y 2M - 9M
Boys tailored trousers	10Y-19Y, 6M-9M
Girls navy shorts	4-16C, 4A-18A
Girls trousers (elastic waist)	4C - 18C
Girls trousers (half elastic)	4, 6, 16Y
Girls trousers (button-up)	4-22

ITEM	SIZES
SPORTS UNIFORM	
Sports polo shirt	4 - 4XL
Sports shorts	4 - 3XL
Track jackets	6 - 2XL
Track pants	6 - 2XL
COLD WEATHER OPTIONS	
Primary sloppy joe	4 - 16, S
Navy v-neck (7-12) jumper	10 - 22
Soft shell jacket	4/6-16C, XS-2XL (ladies), S-2XL (mens)
HATS	
PRIMARY GIRLS	Slouch hat with toggle
PRIMARY BOYS	Legionnaire caps or slouch hat with toggle
SECONDARY	Navy baseball cap or Wide brimmed hat
MISCELLANEOUS	
Library Bags	
Scarves	
SECONDHAND CLOTHING can be purchased through the online uniform store.	
We are able to place special orders if you require smaller or larger items. Orders take at least eight (8) weeks to be made. Please order A.S.A.P. Email: uniforms@ncs.nsw.edu.au	

Uniform fitting tips

Primary Dress

The length of all primary/secondary dresses and secondary skirts must be long enough to touch the knee.

Shorts Tailored Boys

Please note when fitting this style.

If you are finding the length and waist size is correct, but the tigher in other areas, this means that you should move to the Men's sizing.

Example: 12Y is same waist measurment as the 2M. The difference is in the rise of the pants.

Rather than going to a 14Y and have the waist too big, move into the Men's size of this product.

2M is equivalent to a 16Y

Shorts Boys Tailored (Mens sizes 2M to 9M)

Please note when fitting this style.

If you are finding the length and waist size is correct, but loose in other areas, this means that you should move to the Youth sizing.

Example: 2M is same waist measurment as the 12Y. The difference is in the rise of the pants.

Rather than going to a smaller size and have the waist too tight, move into the Youth's size of this product.

2M is equivalent to a 16Y

Secondary and Senior skirts

This product is made to a standard 'to knee length'. This does not guarantee that it will sit at the knee on every student. When fitting for the skirt, we would like to recommend that you consider the length of the skirt.

The NCS uniform policy states - The length of all primary dresses and secondary skirts must be long enough to touch the knee.

This means that if the length is correct and waist is too loose, then you should alter at the waist.

If you prefer not to adjust at the waist, then ensure that there is enough hemline to be able to drop this to the required length.

JANUARY 2024 UNIFORM FITTING TIMES

Monday 22 January - 9am - 3pm

By appoinment for fittings only.

[Book fittings here online](#)